

For adults with active psoriatic arthritis



# Emerge Tremfya<sup>®</sup>

With less joint pain, stiffness, and swelling at 24 weeks.  
Individual results may vary.



TREMFYA<sup>®</sup> is a prescription medicine used to treat adults with active psoriatic arthritis.

## SELECTED IMPORTANT SAFETY INFORMATION

TREMFYA<sup>®</sup> is not for everyone; only your doctor can decide if it's right for you. Do not use if you are allergic to TREMFYA<sup>®</sup>. TREMFYA<sup>®</sup> is a prescription medicine that may cause serious side effects, including serious allergic reactions and infections. TREMFYA<sup>®</sup> affects your immune system. It may increase your risk of infections and lower your ability to fight them. Please read the [Important Safety Information](#) on page 8 and the [Medication Guide](#) for TREMFYA<sup>®</sup> to learn more about these and other risks for TREMFYA<sup>®</sup>. Discuss any questions you have with your doctor.

## Reduced joint pain, stiffness, and swelling



More than half of study participants had **at least a 20% improvement** in joint symptoms\*

\*In two medical studies, more than 5 out of 10 patients treated with TREMFYA<sup>®</sup> had at least a 20% improvement in active PsA symptoms (joint pain, stiffness, swelling) at 24 weeks compared to placebo.

## Reduced fatigue for some patients

Treatment with TREMFYA<sup>®</sup> resulted in improvement in PsA-related fatigue. Patients' level of fatigue was assessed using a questionnaire to measure self-reported tiredness, weakness, and difficulty conducting usual activities due to fatigue. Patients were asked to indicate their level of fatigue in the seven days prior.

Individual results may vary.

### SELECTED IMPORTANT SAFETY INFORMATION

TREMFYA<sup>®</sup> is not for everyone; only your doctor can decide if it's right for you. Do not use if you are allergic to TREMFYA<sup>®</sup>. TREMFYA<sup>®</sup> is a prescription medicine that may cause serious side effects, including serious allergic reactions and infections. TREMFYA<sup>®</sup> affects your immune system. It may increase your risk of infections and lower your ability to fight them. Please read the [Important Safety Information](#) on page 8 and the [Medication Guide](#) for TREMFYA<sup>®</sup> to learn more about these and other risks for TREMFYA<sup>®</sup>. Discuss any questions you have with your doctor.



## The ability to do more of what you used to do

TREMFYA® can help reduce the joint pain, stiffness, and swelling that make everyday tasks harder to do. Patients' ability to perform everyday activities was assessed in a questionnaire. People taking TREMFYA® showed an overall improvement in their ability to perform daily activities such as:



Dressing & Grooming



Getting Up



Eating



Walking



Washing Up



Reaching



Gripping



Daily Activities

## More than joint relief—clearer skin, too

Psoriatic arthritis patients treated with TREMFYA® saw an improvement in psoriasis skin plaques.

Individual results may vary.

### SELECTED IMPORTANT SAFETY INFORMATION

TREMFYA® is not for everyone; only your doctor can decide if it's right for you. Do not use if you are allergic to TREMFYA®. TREMFYA® is a prescription medicine that may cause serious side effects, including serious allergic reactions and infections. TREMFYA® affects your immune system. It may increase your risk of infections and lower your ability to fight them. Please read the [Important Safety Information](#) on page 8 and the [Medication Guide](#) for TREMFYA® to learn more about these and other risks for TREMFYA®. Discuss any questions you have with your doctor.

## Less joint pain, stiffness, and swelling is possible, even at 2 years



For patients who continued on TREMFYA® for 2 years, a similar percentage (7 out of 10 patients) saw a 20% improvement in PsA symptoms at 2 years\*

\*At 24 weeks and thereafter, patients and healthcare providers knew that TREMFYA® was being used. This may have increased results. Results may vary.

Individual results may vary.

## DOSING

### 6 doses per year after 2 starter doses\*

Day 1

1 Injection on Day 1

Week 4

1 Injection 4 Weeks Later

Week 12  
& beyond

1 Injection Every 8 Weeks

\*TREMFYA<sup>®</sup> is a 100 mg injection taken under the skin at weeks 0 and 4, and then every 8 weeks. Your first self-injection should be performed at your doctor's office so he or she can show you the right way to give yourself the injections. After this training, and with your healthcare provider's approval, you may be able to inject at home.

#### SELECTED IMPORTANT SAFETY INFORMATION

TREMFYA<sup>®</sup> is not for everyone; only your doctor can decide if it's right for you. Do not use if you are allergic to TREMFYA<sup>®</sup>. TREMFYA<sup>®</sup> is a prescription medicine that may cause serious side effects, including serious allergic reactions and infections. TREMFYA<sup>®</sup> affects your immune system. It may increase your risk of infections and lower your ability to fight them. Please read the [Important Safety Information](#) on page 8 and the [Medication Guide](#) for TREMFYA<sup>®</sup> to learn more about these and other risks for TREMFYA<sup>®</sup>. Discuss any questions you have with your doctor.



Not actual size



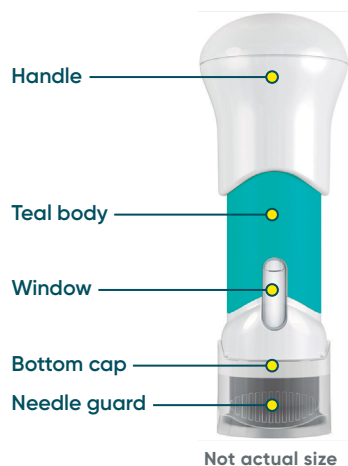
### A device designed with you in mind

The One-Press patient-controlled injector features an easy-to-hold design and a hidden needle.

Please read the [Instructions for Use](#) before using your TREMFYA<sup>®</sup> One-Press patient-controlled injector and each time you get a refill.



## Discover the One-Press patient-controlled injector



## Take a virtual tour of the One-Press

Scan the code with your smartphone to begin.



- 1 Point your smartphone camera at the marker to get started
- 2 Use your fingers to rotate and zoom in on the One-Press
- 3 Tap "See It Live" and experience the One-Press in 3D

## SELECTED IMPORTANT SAFETY INFORMATION

TREMFYA® is not for everyone; only your doctor can decide if it's right for you. Do not use if you are allergic to TREMFYA®. TREMFYA® is a prescription medicine that may cause serious side effects, including serious allergic reactions and infections. TREMFYA® affects your immune system. It may increase your risk of infections and lower your ability to fight them. Please read the [Important Safety Information](#) on page 8 and the [Medication Guide](#) for TREMFYA® to learn more about these and other risks for TREMFYA®. Discuss any questions you have with your doctor.

## The Arthritis Foundation seal of approval



The One-Press patient-controlled injector was awarded the Arthritis Foundation's Ease of Use seal after being tested by patients with psoriatic arthritis.

## Hassle-free disposal

If you've received approval from your doctor to inject at home and have been properly trained, the **Safe Returns®** program is a simple, safe, and convenient way to dispose of your used devices—at no cost to you.



To join this program, scan the QR code with your phone's camera. After you sign up, you'll **receive an approved Safe Returns® disposal envelope in the mail**, along with easy-to-follow mail-back instructions.

Once you and your doctor have determined that TREMFYA<sup>®</sup> is right for you

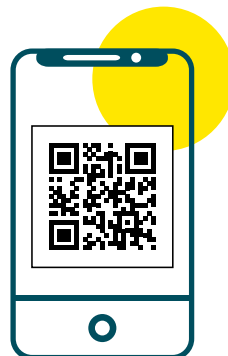
Tremfya *withMe*

## A support program built around you

We're committed to making sure you have what you want, when you want it. Your treatment journey is about more than appointments and injections: it's about you feeling supported.

Once you have your prescription, enroll in [TREMFYA withMe](#) and get access to these free support resources:

## Enroll today



Sign up by scanning this QR code with your phone's camera or call:

1-833-WITHME1 (948-4631)  
 Monday through Friday from  
 8:00 AM to 11:00 PM ET

Visit [tremfyawithme.com](https://tremfyawithme.com) for more information.

## Dedicated support throughout your TREMFYA<sup>®</sup> treatment journey



### TREMFYA withMe Guide

Meet your dedicated TREMFYA withMe Guide, a qualified healthcare professional\* who will help you throughout your treatment journey with the support and information you need.

\*Guides do not provide medical advice. Please consult your doctor for any questions you have about your disease or therapy.



### Prescription and Cost Support

You'll receive support to help you: verify your insurance coverage, understand how to fill your prescriptions, and look for options that could make your treatment more affordable.



### Treatment Support

You'll get access to information about your disease, injection support, and how to safely return used syringes.

Your doctor is the best person to help you understand what to expect. Your Guide is also available, after you have talked with your doctor, if you have questions about injections.

TREMFYA withMe is limited to education about TREMFYA<sup>®</sup>, its administration, and/or the condition it treats. It is not intended to provide medical advice, replace a treatment plan you receive from your doctor or nurse, or serve as a reason for you to start or stay on treatment.

## Tremfya *withMe* Savings Program

For eligible commercially insured patients

Pay **\$5** per injection



Maximum program benefit per calendar year shall apply. Terms expire at the end of each calendar year and may change. See program requirements at [TREMFYAwithMeSavings.com](https://www.tremfya.com/withMeSavings).

Get instant savings on your out-of-pocket costs for your Janssen medication. Depending on your health insurance plan, savings may apply toward co-pay, co-insurance, or deductible.

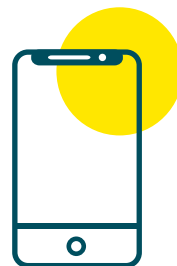
### Am I eligible?

You may be eligible for the TREMFYA withMe Savings Program if you are age 18 or older and use commercial or private health insurance for TREMFYA<sup>®</sup> and must pay an out-of-pocket cost for your medication. There is no income requirement.

See full program requirements at [TREMFYAwithMeSavings.com](https://www.tremfya.com/withMeSavings).

## Start saving today

To get a TREMFYA withMe Savings Program card:



Text **"SAVINGS"** to **56011**  
 (Message and data rates may apply\*)

**Express Enrollment**  
[MyJanssenCarePath.com/Express](https://www.MyJanssenCarePath.com/Express)

Once enrolled, receive an electronic Savings Program card that can be saved to your digital wallet on your iPhone or Android device.

If you enroll in the Savings Program via Mobile or Express Enrollment, you will not be able to view and manage your Savings Program benefits until you create an account at [MyJanssenCarePath.com](https://www.MyJanssenCarePath.com).

\*See the [Terms and Conditions](#) and [Privacy Policy](#).

Please read the Important Safety Information for TREMFYA<sup>®</sup> on [page 8](#).



## Important safety information

### What is the most important information I should know about TREMFYA<sup>®</sup>?

**TREMFYA<sup>®</sup> is a prescription medicine that may cause serious side effects, including:**

- **Serious Allergic Reactions.** Stop using TREMFYA<sup>®</sup> and get emergency medical help right away if you develop any of the following symptoms of a serious allergic reaction:

- |   |   |
|---|---|
| • fainting, dizziness, feeling lightheaded (low blood pressure) | • trouble breathing or throat tightness |
| • swelling of your face, eyelids, lips, mouth, tongue or throat | • chest tightness                       |
|   | • skin rash, hives                      |
|   | • itching                               |

- **Infections.** TREMFYA<sup>®</sup> may lower the ability of your immune system to fight infections and may increase your risk of infections. Your healthcare provider should check you for infections and tuberculosis (TB) before starting treatment with TREMFYA<sup>®</sup> and may treat you for TB before you begin treatment with TREMFYA<sup>®</sup> if you have a history of TB or have active TB. Your healthcare provider should watch you closely for signs and symptoms of TB during and after treatment with TREMFYA<sup>®</sup>.

Tell your healthcare provider right away if you have an infection or have symptoms of an infection, including:

- |  |  |
|--|--|
| • fever, sweats, or chills   | • diarrhea or stomach pain                                     |
| • muscle aches   | • shortness of breath  |
| • weight loss  | • blood in your phlegm (mucus)                                 |
| • cough  | • burning when you urinate or urinating more often than normal |
| • warm, red, or painful skin or sores on your body different from your psoriasis |  |

**Do not take TREMFYA<sup>®</sup>** if you have had a serious allergic reaction to guselkumab or any of the ingredients in TREMFYA<sup>®</sup>.

**Before using TREMFYA<sup>®</sup>, tell your healthcare provider about all of your medical conditions, including if you:**

- have any of the conditions or symptoms listed in the section **"What is the most important information I should know about TREMFYA<sup>®</sup>?"**

- have an infection that does not go away or that keeps coming back.
- have TB or have been in close contact with someone with TB.
- have recently received or are scheduled to receive an immunization (vaccine). You should avoid receiving live vaccines during treatment with TREMFYA<sup>®</sup>.
- are pregnant or plan to become pregnant. It is not known if TREMFYA<sup>®</sup> can harm your unborn baby.
- are breastfeeding or plan to breastfeed. It is not known if TREMFYA<sup>®</sup> passes into your breast milk.

**Tell your healthcare provider about all the medicines you take**, including prescription and over-the-counter medicines, vitamins, and herbal supplements.

### What are the possible side effects of TREMFYA<sup>®</sup>?

**TREMFYA<sup>®</sup> may cause serious side effects. See "What is the most important information I should know about TREMFYA<sup>®</sup>?"**

#### The most common side effects of TREMFYA<sup>®</sup> include:

upper respiratory infections, headache, injection site reactions, joint pain (arthralgia), diarrhea, stomach flu (gastroenteritis), fungal skin infections, herpes simplex infections, and bronchitis.

These are not all the possible side effects of TREMFYA<sup>®</sup>. Call your doctor for medical advice about side effects.

Use TREMFYA<sup>®</sup> exactly as your healthcare provider tells you to use it.

**Please read the full Prescribing Information, including Medication Guide for TREMFYA<sup>®</sup>, and discuss any questions that you have with your doctor.**

**You are encouraged to report negative side effects of prescription drugs to the FDA. Visit [www.fda.gov/medwatch](http://www.fda.gov/medwatch), or call 1-800-FDA-1088.**

cp-82626v3

## Learn more about TREMFYA®

For adults with active psoriatic arthritis

Click to see the [Prescribing Information](#),  
[Medication Guide](#), and [Instructions for Use](#).

### SELECTED IMPORTANT SAFETY INFORMATION

TREMFYA® is not for everyone; only your doctor can decide if it's right for you. Do not use if you are allergic to TREMFYA®. TREMFYA® is a prescription medicine that may cause serious side effects, including serious allergic reactions and infections. TREMFYA® affects your immune system. It may increase your risk of infections and lower your ability to fight them. Please read the [Important Safety Information](#) on page 8 and the [Medication Guide](#) for TREMFYA® to learn more about these and other risks for TREMFYA®. Discuss any questions you have with your doctor.



## Emerge today

### Ask your doctor about TREMFYA®

TREMFYA® is a prescription medicine used to treat adults with active psoriatic arthritis.

Visit [TREMFYA.com](https://www.tremfya.com) for more information.



Tremfya *withMe*

Visit [tremfyawithme.com](https://tremfyawithme.com) for more information.

### Questions?

Call a TREMFYA withMe Guide at 1-833-WITHME1 (948-4631), Monday-Friday, 8:00 AM to 11:00 PM ET. Multilingual phone support is available.

### SELECTED IMPORTANT SAFETY INFORMATION

TREMFYA® is not for everyone; only your doctor can decide if it's right for you. Do not use if you are allergic to TREMFYA®. TREMFYA® is a prescription medicine that may cause serious side effects, including serious allergic reactions and infections. TREMFYA® affects your immune system. It may increase your risk of infections and lower your ability to fight them. Please read the [Important Safety Information](#) on page 8 and the [Medication Guide](#) for TREMFYA® to learn more about these and other risks for TREMFYA®. Discuss any questions you have with your doctor.